

Cheap and Easy SDR

QST Magazine

January 2013

Pages 30-36

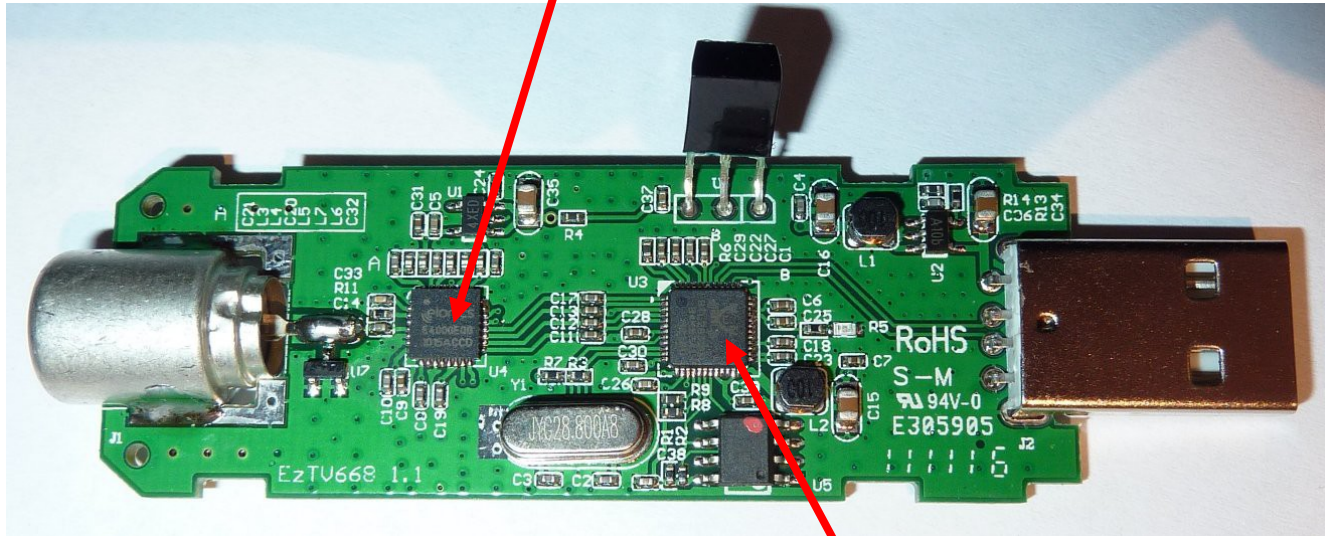
Uses a **DVB-T** USB Dongle



For viewing **D**igital **V**ideo **B**roadcasts on a computer

Uses a **DVB-T** USB Dongle

Synthesized tuner chip



RTL2832 quadrature decoder chip

Synthesized Tuner Chip

- **E4000** - 52 to 2200 MHz (gap between 1100 Mhz and 1250 MHz)
- **R820T** - 24 to 1766 MHz
- FC0013 - 22 to 1100 MHz
- FC0012- 22 to 948.6 MHz

As Seen on EBay



\$13.72

As Seen on EBay

DVB[®]T

E4000

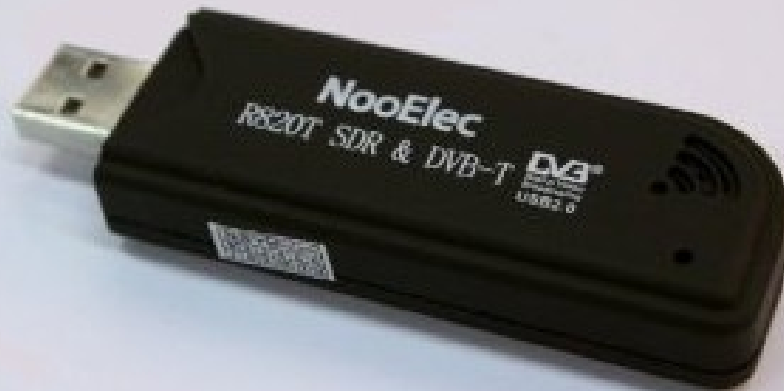


TERRATEC
ENTER ENTERTAINMENT

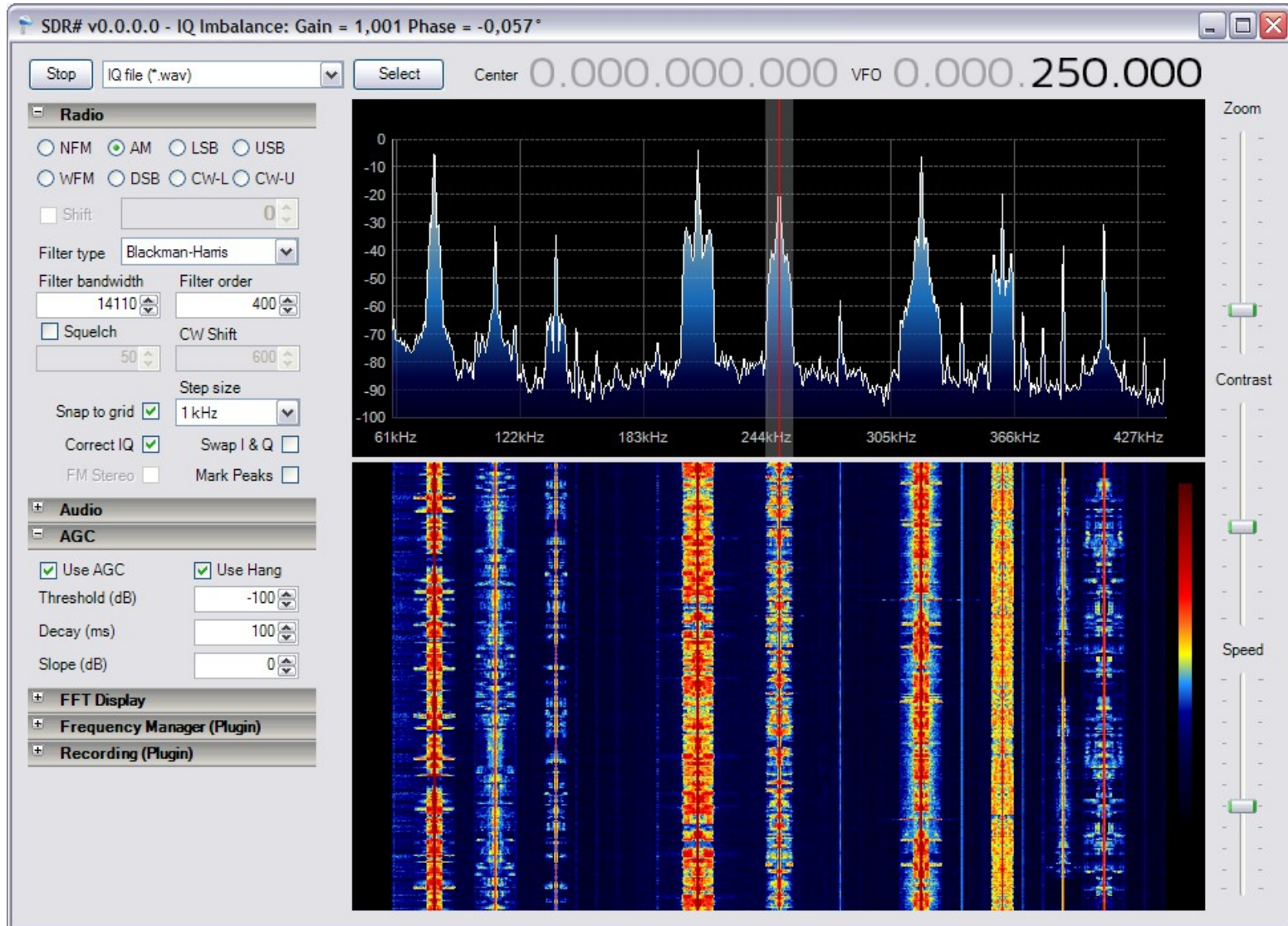
As Seen at Amazon

NooElec TV28T V2 USB DVB-T & RTL-SDR Receiver, RTL2832U & R820T Tuner, MCX Input. Low-Cost Software Defined Radio Compatible with Many SDR Software Packages. R820T Tuner & ESD-Safe Antenna Input, Guaranteed -NooElec Inc.

\$19.95



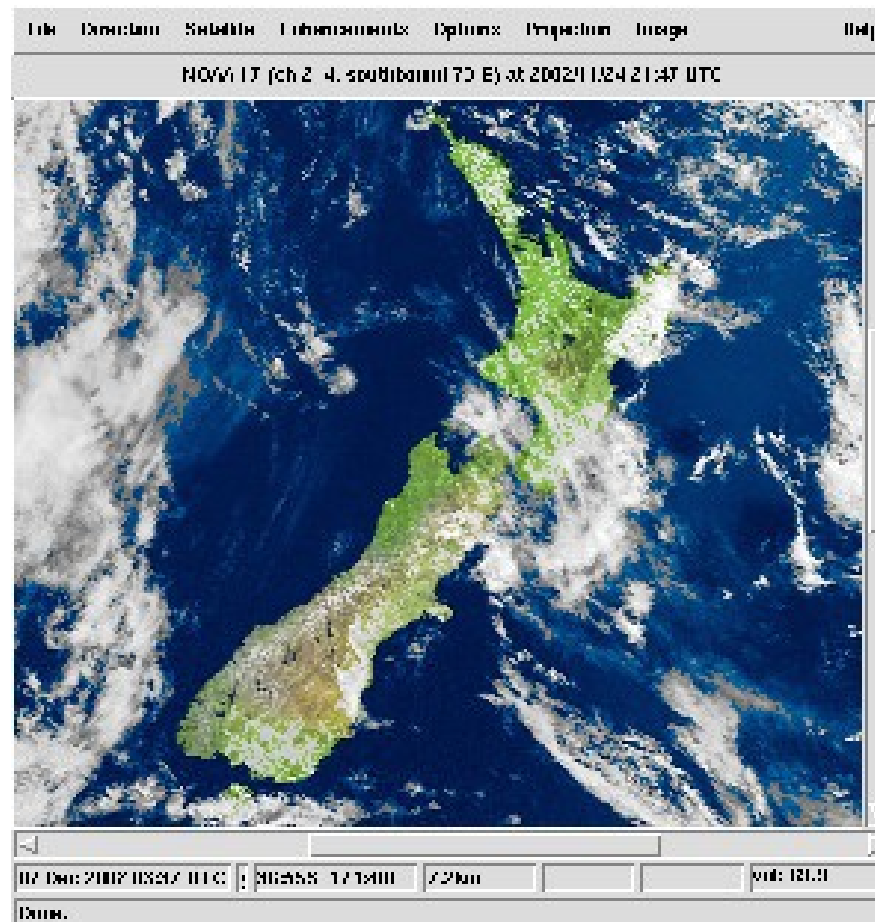
Uses SDR# Program for Control



SDR# Features

- All modes of operation
- No pre-amp required
- AGC
- Squelch & Volume controls
- Display Range control
- Resolution control
- Selectable (variable) filter control
- Frequency correction control
- Displays spectrum analyzer, waterfall, or both
- Save your 'favorite frequencies'
- Record and Playback

DVB-T Dongle and SDR# Program can also be used with WXTOIMG software To capture weather satellite pictures.



Yahoo Group Page:

[HTTP://uk.groups.yahoo.com/group/SDRSharp/](http://uk.groups.yahoo.com/group/SDRSharp/)

SDR# Program Download:

[HTTP://sdrsharp.com/index.php/downloads](http://sdrsharp.com/index.php/downloads)